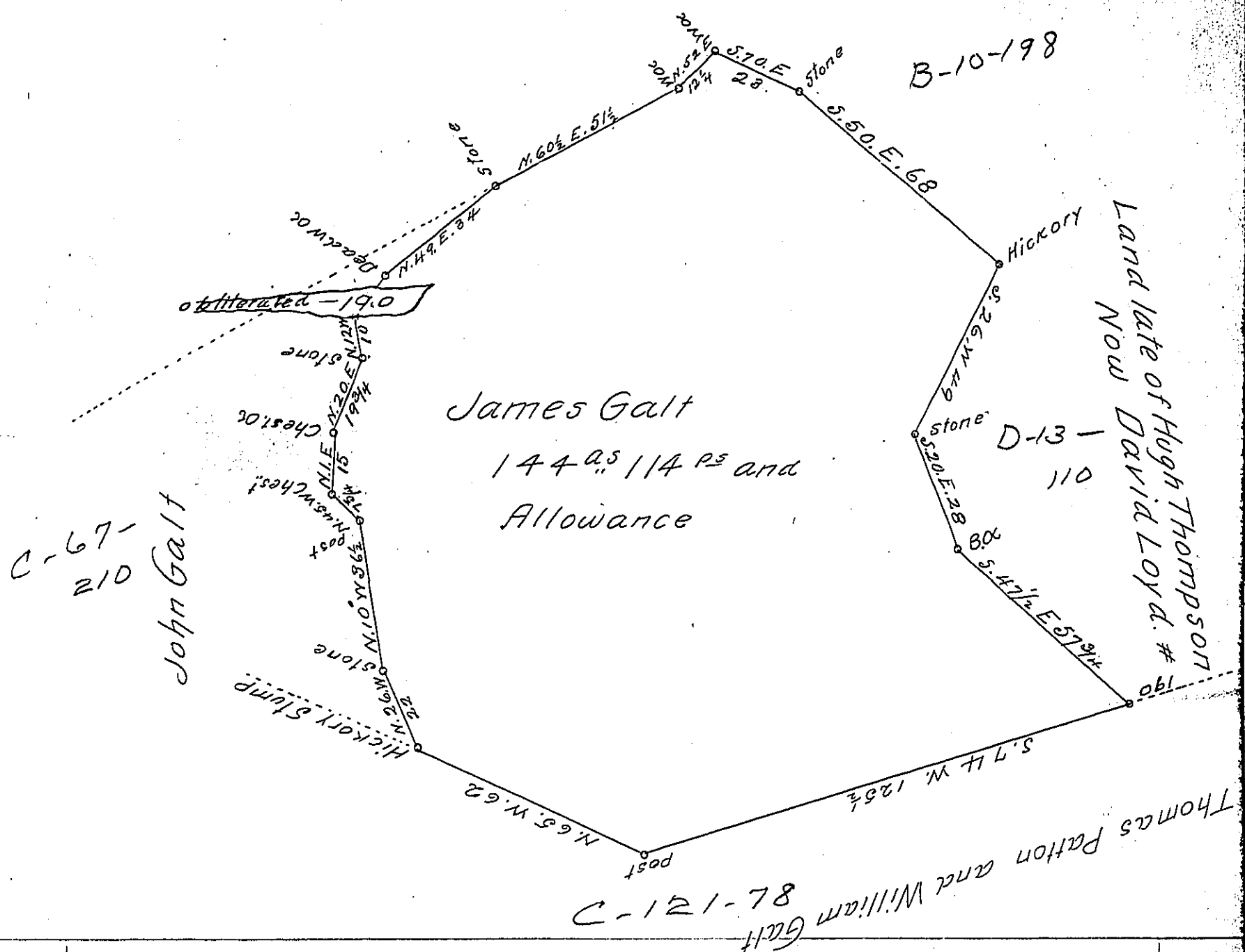


Land late of W^m Wilson



A Draught of a Tract of Land Situate in Salisbury Township Lancaster County Containing 144^{ac.} & 114^{ps} and the usual Allowance of Six pr. Cent for Roads &c. Surveyed (According to the Old Line & Corner) the 31st Day of December A.D. 1804 for James Galt By Virtue of a Warrant Dated the 31st Day of August 1749

pr. H. Beam D.S.
and Sam^l. Ensminger D.Sr.

To Samuel Cochran Esq^r.
Surveyor General.

IN TESTIMONY that the above is a copy of the original remaining on file in the Department of Internal Affairs of Pennsylvania, made conformably to an Act of Assembly approved the 16th day of February, 1833, I have hereunto set my Hand and caused the Seal of said Department to be affixed at Harrisburg, this twenty third day of January 1905

Loose B. B...
Secretary of Internal Affairs